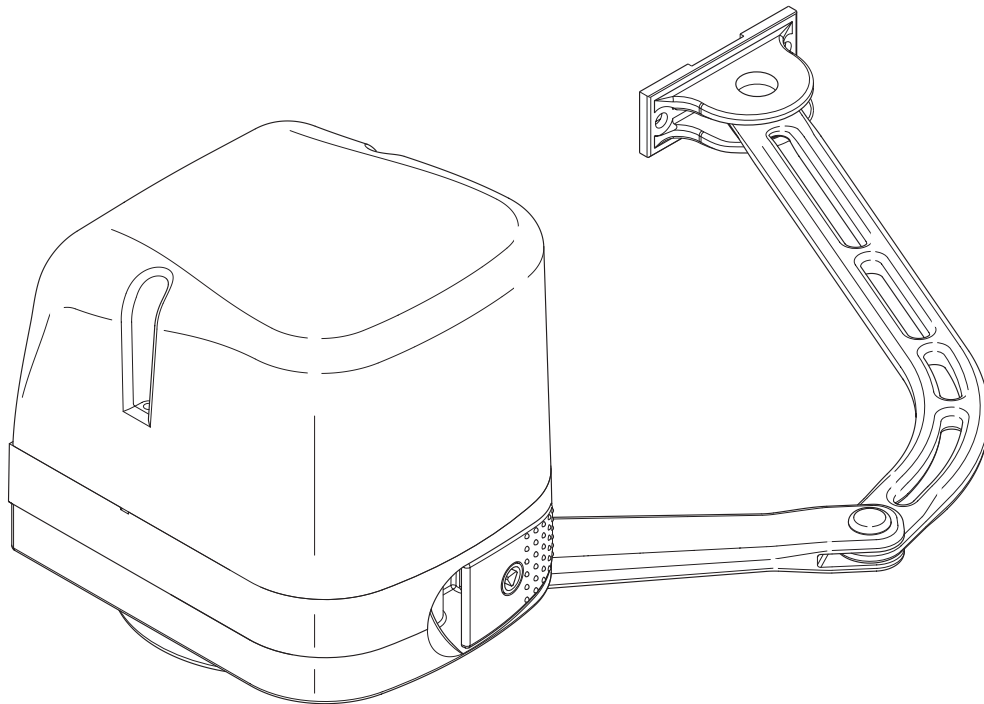


- I** AUTOMAZIONI A BRACCIO PER CANCELLI A BATTENTE
- GB** ARM AUTOMATIONS FOR SWING GATES
- F** AUTOMATIONS A BRAS POUR PORTAILS BATTANTS
- D** ARM AUTOMATIONEN FUER FLUGELGITERTIRE
- E** AUTOMATIZACIONES A BRAZO PARA PORTONES CON BATIENTE
- P** AUTOMATIZAÇÕES DE BRAÇO PARA PORTÕES DE BATENTE



VIRGO



ISTRUZIONI D'USO E DI INSTALLAZIONE
INSTALLATION AND USER'S MANUAL
INSTRUCTIONS D'UTILISATION ET D'INSTALLATION
INSTALLATIONS-UND GEBRAUCHSANLEITUNG
INSTRUCCIONES DE USO Y DE INSTALACION
INSTRUÇÕES DE USO E DE INSTALAÇÃO



**AZIENDA CON SISTEMA
 DI GESTIONE INTEGRATO
 CERTIFICATO DA DNV
 = UNI EN ISO 9001:2000 =
 UNI EN ISO 14001:1996**

Via Lago di Vico, 44
 36015 Schio (VI)
 Tel.naz. 0445 696511
 Tel.int. +39 0445 696533
 Fax 0445 696522
 Internet: www.bft.it
 E-mail: sales@bft.it



Thank you for buying this product. Our company is sure that you will be more than satisfied with the product's performance. Carefully read the "WARNINGS" pamphlet and the "INSTRUCTION BOOKLET" which are supplied together with this product, since they provide important information regarding the safety, installation, use and maintenance of the product. This product complies with recognised technical standards and safety regulations. We declare that this product is in conformity with the following European Directives: 73/23/EEC, 89/336/EEC, 98/37/EEC and subsequent amendments.

1) GENERAL OUTLINE

Low-voltage operator (24Vdc) suitable for residential use. Designed for swing gates having small-sized pillars. The operating arm, with its special antishearing shape, allows the leaves to be manoeuvred even when the operator is positioned well away from their fulcrum. The irreversible electromechanical gearmotor keeps the gate locked in the closing and opening positions.

The release lever, fitted to the outside of each operator, allows the manual manoeuvre to be carried out very easily.

WARNING! The installation, the maintenance and the repair should be done by responsible and qualified persons with an updated knowledge of the current safety standards. It's strictly forbidden to service the automation when the power is on.

ATTENTION! The VIRGO model controller is not equipped with mechanical torque adjustment. It is compulsory to use a control panel of the same manufacturer, in compliance with the basic safety requirements of directives 73/23/CEE, 89/336/CEE, 98/37/CEE equipped with appropriate electric adjustment of the torque.

2) EMERGENCY MANOEUVRE (Fig. 1)

In the case where the power supply is off, or any faults are present, the manual emergency manoeuvre can be carried out by operating the external release lever (Fig.1 ref."S").

- 1) Insert the release key and turn it clockwise (Fig.1 ref."1").
- 2) Move lever "S" until the lock is released (Fig.1 ref."2").
- 3) Keep the lever in the release position by turning the key clockwise (Fig.1 ref."3").
- 4) Push the leaf slowly to open or close the gate.

To reactivate motor-driven operation, turn the key clockwise to free the lever from its released position, then return it to its initial position for normal operation.

WARNING! Before carrying out the manual manoeuvre make sure that this operation will not create dangerous situations.

SCRAPPING

WARNING! This operation should only be carried out by qualified personnel. Materials must be disposed of in conformity with the current regulations. In case of scrapping, the automation devices do not entail any particular risks or danger. In case of materials to be recycled, these should be sorted out by type (electrical components, copper, aluminium, plastic etc.).

DISMANTLING

WARNING! This operation should only be carried out by qualified personnel. When the automation system is disassembled to be reassembled on another site, proceed as follows:

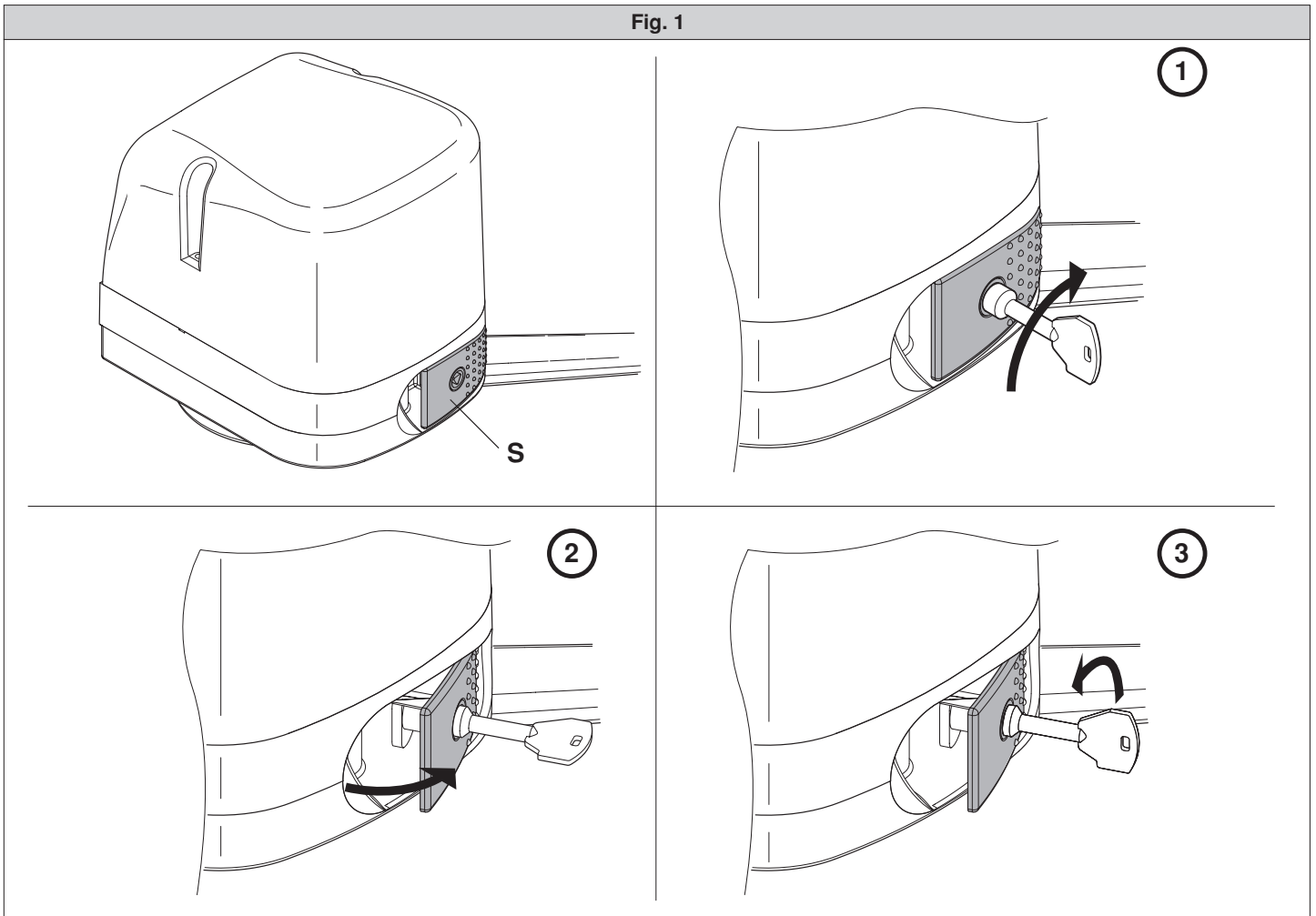
- Disconnect the power supply and the entire external electrical installation.
- In the case where some of the components cannot be removed or are damaged, they must be replaced.

WARNINGS

Correct controller operation is only ensured when the data contained in the present manual are observed. The company is not to be held responsible for any damage resulting from failure to observe the installation standards and the instructions contained in the present manual.

The descriptions and illustrations contained in the present manual are not binding. The Company reserves the right to make any alterations deemed appropriate for the technical, manufacturing and commercial improvement of the product, while leaving the essential product features unchanged, at any time and without undertaking to update the present publication.

Fig. 1



Thank you for buying this product. Our company is sure that you will be more than satisfied with the product's performance. Carefully read the "WARNINGS" pamphlet and the "INSTRUCTION BOOKLET" which are supplied together with this product, since they provide important information regarding the safety, installation, use and maintenance of the product. This product complies with recognised technical standards and safety regulations. We declare that this product is in conformity with the following European Directives: 73/23/ EEC, 89/336/ EEC, 98/37/EEC and subsequent amendments.

1) GENERAL SAFETY

WARNING! An incorrect installation or improper use of the product can cause damage to persons, animals or things.

- The "Warnings" leaflet and "Instruction booklet" supplied with this product should be read carefully as they provide important information about safety, installation, use and maintenance.
- Scrap packing materials (plastic, cardboard, polystyrene etc) according to the provisions set out by current standards. Keep nylon or polystyrene bags out of children's reach.
- Keep the instructions together with the technical brochure for future reference.
- This product was exclusively designed and manufactured for the use specified in the present documentation. Any other use not specified in this documentation could damage the product and be dangerous.
- The Company declines all responsibility for any consequences resulting from improper use of the product, or use which is different from that expected and specified in the present documentation.
- Do not install the product in explosive atmosphere.
- The construction components of this product must comply with the following European Directives: 89/336/CEE, 73/23/EEC, 98/37/EEC and subsequent amendments. As for all non-EEC countries, the above-mentioned standards as well as the current national standards should be respected in order to achieve a good safety level.
- The Company declines all responsibility for any consequences resulting from failure to observe Good Technical Practice when constructing closing structures (door, gates etc.), as well as from any deformation which might occur during use.
- The installation must comply with the provisions set out by the following European Directives: 89/336/CEE, 73/23/EEC, 98/37/EEC and subsequent amendments.
- Disconnect the electrical power supply before carrying out any work on the installation. Also disconnect any buffer batteries, if fitted.
- Fit an omnipolar or magnetothermal switch on the mains power supply, having a contact opening distance equal to or greater than 3,5 mm.
- Check that a differential switch with a 0.03A threshold is fitted just before the power supply mains.
- Check that earthing is carried out correctly: connect all metal parts for closure (doors, gates etc.) and all system components provided with an earth terminal.
- Fit all the safety devices (photocells, electric edges etc.) which are needed to protect the area from any danger caused by squashing, conveying and shearing, according to and in compliance with the applicable directives and technical standards.
- Position at least one luminous signal indication device (blinker) where it can be easily seen, and fix a Warning sign to the structure.
- The Company declines all responsibility with respect to the automation safety and correct operation when other manufacturers' components are used.
- Only use original parts for any maintenance or repair operation.
- Do not modify the automation components, unless explicitly authorised by the company.
- Instruct the product user about the control systems provided and the manual opening operation in case of emergency.
- Do not allow persons or children to remain in the automation operation area.
- Keep radio control or other control devices out of children's reach, in order to avoid unintentional automation activation.
- The user must avoid any attempt to carry out work or repair on the automation system, and always request the assistance of qualified personnel.
- Anything which is not expressly provided for in the present instructions, is not allowed.
- Installation must be carried out using the safety devices and controls prescribed by the EN 12978 Standard.

2) GENERAL OUTLINE

Low-voltage operator (24Vdc) suitable for residential use. Designed for swing gates having small-sized pillars. The operating arm, with its special antishearing shape, allows the leaves to be manoeuvred even when the operator is positioned well away from their fulcrum. The irreversible electromechanical gearmotor keeps the gate locked in the closing and opening positions.

The release lever, fitted to the outside of each operator, allows the manual manoeuvre to be carried out very easily.

WARNING! The installation, the maintenance and the repair should be done by responsible and qualified persons with an updated knowledge of the current safety standards. It's strictly forbidden to service the automation when the power is on.

ATTENTION! The VIRGO model controller is not equipped with mechanical torque adjustment. It is compulsory to use a control panel of the same manufacturer, in compliance with the basic safety requirements of directives 73/23/CEE, 89/336/CEE, 98/37/CEE equipped with appropriate electric adjustment of the torque.

Before carrying out the manual manoeuvre make sure that this operation will not create a dangerous situations.

Check in the relevant literature that the thermal field in the working area is suitable for the operator.

Make sure that the movement of the door does not cause entrapment risks between the movable and fixed parts of the door.

If swing gates with built-in doors are used, the motor must not run when the door is left open.

WARNING! The operator must be installed by a qualified technician as special safety components are used for every specific site and therefore safety depends on installation.

3) TECHNICAL SPECIFICATIONS

3.1) VIRGO OPERATOR

Motor: 24Vd.c. 2500 min⁻¹
 Power: 40W
 Insulation class: F
 Lubrication: Permanent grease
 Reduction ratio: 1-1224
 Output shaft revolutions: 2 min⁻¹ MAX
 Opening time 90°: 14s
 Torque supplied: 170 Nm
 Max leaf weight and length: 2000N (~200kg) for 2m long leaf
 Impact reaction: Integrated torque limiter
 on LINX control panel
 Motion drive: Lever arm
 Stop: Incorporated electrical limit switches + mechanical locks
 Manual manoeuvre: Release lever with CLS key
 Number of manoeuvres in 24h: 60
 Environmental conditions: from -15 to +50 °C
 Degree of protection: IPX4
 Operator weight: VIRGO:80N (~8kg) - VIRGO SQ:60N (~6kg)
 Dimensions: see fig.1

3.2) LINX CONTROL PANEL

Power supply: 230Va.c. ±10% 50Hz*
 Mains/low voltage insulation: > 2MΩhm 500Vdc
 Working temperature from -15 to +50 °C
 Dielectric strength: mains/l.v. 3750Va.c. for 1 minute
 Motor output current: 3.5A+3.5A max
 Motor relay commutation current: 10A
 Maximum motor power: 40W (24Vd.c.)
 Power supply for accessories: 24Va.c. (180mA max absorption)
 24Va.c.safe (180mA max absorption)
 Gate-open warning light: N.O. contact (24Va.c./1A max)
 Blinker: 24Va.c. 25W max
 Dimensions: see figure 1
 Fuses: see fig.9-15
 (*other voltages available on request)

3.3) VIRGO BAT BATTERY KIT (OPTIONAL - Fig.14)

Allows operation to continue even when the mains power supply is off for a short time.

Charge voltage: 27.2Vd.c.
 Charge current: 130mA
 Data detected with external temperature of: 25°C
 Battery capacity: 2x (12V 1.2Ah)
 Exhausted battery protection threshold: 20.4Vd.c.
 Battery recharge time: 12/14 h

NOTE: In case of operation with battery back up, the outputs to terminals 8-9 (Vsafe 24Va.c.) and 10-11 (Vsafe 24Va.c.) show a voltage of 24Vd.c. polarised as indicated in Fig.16.

At the time of installing the VIRGO BAT Kit, check that the safety devices are connected correctly.

4) OPERATOR INSTALLATION

4.1) Preliminary checks

Check that:

- The gate structure is sufficiently sturdy and rigid.
The fixing position must be worked out according to the leaf structure. In any case, the manoeuvring arm must push against a reinforced leaf point.
- The leaves can be moved manually along their entire stroke.
If the gate has not been installed recently, check the wear condition of all its components. Repair or replace defective and worn parts.
Operator reliability and safety are directly affected by the condition of the gate structure.

5) SUPPORT PLATE FIXING (Fig.5)

The operator is supplied with a fixing bracket and lever arm.

Having identified the leaf reinforcement point, with the gate closed, trace an imaginary horizontal line from the centre of the reinforcement point to the pillar (fig. 3-4).

Fig. 2 illustrates the most common types of installation:

- with the leaf hinge pivot not aligned with the fixing plate
(90° opening – maximum distance between hinge pivot and plate: 210mm)

- with the hinge pivot aligned with the fixing plate

Position the anchoring bracket observing the dimensions shown in fig.3 for opening up to 90°, or in fig.2-4 for opening over 90° up to a max of 120°.

The pillar surface, where the bracket is fixed, must be flat and parallel to the leaf. Use screws and expansion plugs adequate for the type of pillar. In the case where the pillar surface is irregular, use expansion plugs with studs, in order to be able to adjust the fixing bracket parallel to the leaf (fig.5).

- Assemble the lever arm as in fig.7.
DX = fitting to right leaf
SX = fitting to left leaf
Choose the most suitable position for fixing bracket "F" to the leaf.
- Insert lever L into the gearmotor output shaft, and fix it using appropriate pivot P and self-locking nut D (fig.7).
- Release the operator by activating the release lever to allow the arm to move easily (see paragraph "EMERGENCY MANOEUVRE").
- Open the gearmotor cover and fix it to the plate as indicated in Fig.8.
- Fix towing angle bar "F" to the leaf.
- The correct position for the operator arm is illustrated in fig.6. The leaf attachment point can be identified by positioning the arm according to the dimension indicated in fig.6.
- With the operator released, check the arm for correct movement.
- Repeat the same procedure for the other leaf.

6) BACKSTOP FIXING

The VIRGO operator is provided with mechanical end-of-stroke backstops, which make the installation of ground stop plates redundant.

With reference to Fig. 10 proceed as follows:

- Identify the opening and closing end-of-stroke points and fix the backstops accordingly.
- Fix protection cover C.

7) ELECTRICAL INSTALLATION SET-UP

Arrange the electrical installation as shown in fig.11.

Keep the mains voltage connections definitely separate from the very low voltage connections (24V).

For this purpose, the operator is provided with appropriate fittings, indicated in Fig.9, for a spiral flexible raceway with an inside diameter of 20:

- P1 input for mains power supply + GND.
- P2/P3 inputs for safety devices and accessories.

For the mains power supply, use the appropriate cable clamp (Fig.9 -"S"), the terminal bar with an incorporated protection fuse (Fig.9 -"L-N") and the GND terminal.

Connect the yellow/green cable to the earth terminal.

Fig.16 shows the cross-section and the number of connections.

8) TERMINAL BAR CONNECTIONS (Fig.16)

NOTE: The VIRGO operators provided with incorporated LINX control panels are preset for fitting to the left leaf, whereas the operators without panels (VIRGO-SQ) are preset for fitting to the right leaf, as illustrated by the example given in Fig.11.

Should it be necessary to reverse the operator opening direction, proceed as follows:

- 1 – Reverse motor polarity (JP1 terminals 1-2)
- 2 – Reverse motor polarity (JP2 terminals 14-15)

WARNING – During the wiring and installation operations, refer to the

current standards as well as principles of good technical practice.

The (24V) very low voltage conductors must be physically separated from the low voltage conductors or otherwise be adequately isolated by means of an additional insulation of at least 1 mm.

The wires must be clamped by an extra fastener near the terminals, for example by bands.

All the connection cables must be kept at an adequate distance from the dissipator (Fig.15 "D").

WARNING! For connection to the mains, use a multipolar cable with a minimum of 3x1.5mm² cross section and complying with the previously mentioned regulations. For example, if the cable is outside (in the open), it has to be at least equal to H07RN-F, but if it is on the inside (or outside but placed in a plastic cable channel) it has to be or at least equal to H05VV-F with section 3x1.5mm².

JP1

- 1-2 Motor 2 connection (VIRGO with LINX panel):
- 3-5 Opening limit switch SWO M2 (N.C.)
- 4-5 Closing limit switch SWC M2 (N.C.)
- 6-7 24 Va.c. power supply input from the transformer

JP2

- 8-9 24Va.c. Vsafe 180mA max output – power supply for photocell transmitters with check (Fig.17)
- 10-11 24Va.c. 180mA max output – power supply for photocells or other devices
- 12-13 Blinker connection (24Va.c. 25W max)
- 14-15 Motor 1 connection (VIRGO-SQ – without LINX panel -):
- 16-18 Opening limit switch SWO M1 (N.C.)
- 17-18 Closing limit switch SWC M1 (N.C.)
- 19-24 Pedestrian opening button PED (N.O.). Controls partial opening of Motor M2.
- 20-24 Fault input (N.O.). Input for photocells or safety devices provided with an N.O. check contact.
- 21-24 Photocell input (N.C.). If not used, leave bridged (Fig.17).
- 22-24 STOP button (N.C.). If not used, leave bridged.
- 23-24 START button (N.O.).
- 25-26 Output for gate-open warning light (N.O. contact (24Va.c./1A max) or alternatively for 2nd radio channel (see configuration - "logics" menu)
- 27-28 Antenna input for incorporated radio-receiver board (27 braid - 28 signal).

9) PROGRAMMING

The control panel provided with a microprocessor is supplied with function parameters preset by the manufacturer, suitable for standard installations. The predefined parameters can be altered by means of either the incorporated display programmer or UNIPRO.

In the case where programming is carried out by means of UNIPRO, carefully read the instructions relating to UNIPRO, and proceed in the following way.

Connect the UNIPRO programmer to the control unit through the UNIFLAT and UNIDA accessories (See fig. 18). The LINX control unit does not supply the UNIPRO programmer with power, and therefore requires an appropriate supply unit.

Enter the "CONTROL UNITS" menu, and the "PARAMETERS" submenu, then scroll the display screenfuls using the up/down arrows to set the numerical values of the parameters listed below.

For the function logics, refer to the "LOGIC" submenu.

In the case where programming is carried out by means of the incorporated programmer, refer to Fig. A and B and to the paragraph on "Configuration".

10) CONFIGURATION

The display programmer is used to set all the LINX control panel functions. The programmer is provided with three pushbuttons for menu scrolling and function parameter configuration:

- + menu scrolling/value increment key
- menu scrolling/value reduction key

OK Enter (confirm) key

The simultaneous pressure of the + and - keys is used to exit the active menu and move to the preceding menu.

The modifications made are only set if the OK key is subsequently pressed. When the OK key is pressed for the first time, the programming mode is entered.

The following pieces of information appear on the display at first:



- Control unit software version
- Number of total manoeuvres carried out (the value is expressed in thousands, therefore the display constantly shows 0000 during the first thousand manoeuvres)
- Number of manoeuvres carried out since the latest maintenance operation (the value is expressed in thousands, therefore the display constantly shows 0000 during the first thousand manoeuvres)
- Number of memorised radio control devices.

When the OK key is pressed during the initial presentation phase, the first menu can be accessed directly.

Here follows a list of the main menus and the respective submenus available. The predefined parameter is shown between square brackets [0].

The writing appearing on the display is indicated between round brackets. Refer to Figures A and B for the configuration procedure.

10.1) PARAMETER MENU (PRR Rⁿ)

- **Automatic Closing Time (t c R) [10s]**
Set the numerical value of the automatic closing time from 3 to 60 seconds.
 - **Motor 1 torque (P¹ t) [50%]**
(UNIPRO ⇒ Advanced parameters ⇒ address 3)
Set the numerical value of the motor 1 torque between 1% and 99%.
 - **Motor 2 torque (P² t) [50%]**
(UNIPRO ⇒ Advanced parameters ⇒ address 4)
Set the numerical value of the motor 2 torque between 1% and 99%.
 - **Motor 1 slow-down torque (P¹ t 5L oL) [45%]**
(UNIPRO _ Advanced parameters _ address 8)
Set the numerical value for slow-down torque of motor 1 between 1% and 99%.
 - **Motor 2 slow-down torque (P² t 5L oL) [45%]**
(UNIPRO _ Advanced parameters _ address 9)
Set the numerical value for slow-down torque of motor 2 between 1% and 99%.
- NOTES:** In case of obstacle detection, the Ampere-stop function stops the leaf movement, reverses the motion for 1 sec. and then halts in the STOP status. The motor slow-down torque represents the maximum torque supplied to the motor during the slow-down phase. It must be set to a lower value with respect to the motor torque, in order to allow the Ampere-stop function to be also activated during the slow-down phase.
-  **WARNING: Check that the impact force value measured at the points established by the EN 12445 standard is lower than that specified in the EN 12453 standard.**
-  **Incorrect sensitivity setting can cause injuries to persons or animals, or damage to things.**
- **Opening delay time (oPE n dELAY t iPE) [1s]**
Set the opening delay time for motor 2 relative to motor 1, between 1 and 10 seconds.
 - **Closing delay time (cL5 dELAY t iPE) [1s]**
Set the closing delay time for motor 1 relative to motor 2, between 1 and 10 seconds.
 - **Motor 1 Normal Speed Time (P¹ FR5t t iPE) [5s]**
(UNIPRO fi Advanced parameters fi address 6)
Set the time to normal speed (not slowed down), ranging from 1 to 30 seconds.
 - **Motor 2 Normal Speed Time (P² FR5t t iPE) [5s]**
(UNIPRO fi Advanced parameters fi address 7)
Set the time to normal speed (not slowed down), ranging from 1 to 30 seconds.
Note: The slow-down time, on closing and on opening, is obtained by timing one manoeuvre, and setting a lower value within this parameter. If, for example, one manoeuvre lasts 25 seconds, set "normal speed time" to 20s to obtain 5s of slow-down time, both on closing and on opening.
 - **Slow-down speed (5L oL SPEEd) [2]**
(UNIPRO ⇒ Advanced parameters ⇒ address 5)
Set the slow-down speed by choosing from the following values:
0 – slow-down disabled
1 – slow-down to 50% of normal speed
2 – slow-down to 33% of normal speed.
3 – slow-down to 25% of normal speed.

10.2) LOGIC MENU (L oG t c.)

- **TCA (t c R) [OFF]**
ON Activates automatic closing
OFF Excludes automatic closing
- **3 Steps (3 5tEP) [OFF]**
ON Enables 3-step logic. A Start impulse has the following effects:

- door closed: opens
- on opening: stops and enters TCA (if configured)
- door open: closes
- on closing: stops and reopens
- OFF Enables 4-step logic. A Start impulse has the following effects:
door closed: opens
on opening: stops and enters TCA (if configured)
door open: closes
on closing: stops and does not enter TCA (stop)
after stopping: opens
- **Impulse lock (tBL oPE n) [OFF]**
ON The Start impulse has no effect during the opening phase.
- OFF The Start impulse becomes effective during the opening or closing phase.
- **Rapid closing (FR5t cL5) [OFF]**
ON Closes the gate after photocell disengagement, before waiting for the end of the TCA set.
OFF Command not entered.
- **Photocells on opening (Pho t c. oPE n) [OFF]**
ON: In case of obscuring, this excludes photocell operation on opening. During the closing phase, it immediately reverses the motion.
OFF: In case of obscuring, the photocells are active both on opening and on closing. When a photocell is obscured on closing, it reverses the motion only after the photocell is disengaged.
- **Photocell test (tE5t Pho t) [OFF]**
(UNIPRO ⇒ Advanced logics ⇒ address 14)
ON Activates photocell check
OFF Deactivates photocell check
If this setting is not activated (OFF), it inhibits the photocell checking function, allowing connection of devices not provided with additional checking contact.
- **Gate-open or 2nd radio channel warning light (5cR 2c h) [OFF]**
ON The output between terminals 25 and 26 is configured as Gate-open warning light, in this case the 2nd radio channel controls pedestrian opening.
OFF The output between terminals 25 and 26 is configured as 2nd radio channel.
- **Motors in operation (i P o t o n) [OFF]**
ON Only motor 2 is in operation (terminals 1 and 2).
With this configuration, the pedestrian input is disabled.
OFF Both motors are in operation.
- **Lock hold (bL o c PE r5 t5t) [OFF]**
ON To be used when opening and closing mechanical backstops are fitted.
This function activates leaf pressure on the backstop, without this being considered as an obstacle by the ampere-stop sensor. Then the leaf continues its stroke for another 0,5s, after intercepting the limit switches. Therefore the limit switches are triggered slightly in advance, and the leaves will stop perfectly on the end stop plate.
OFF To be used when no mechanical backstops are fitted.
Movement is exclusively stopped by the limit switches being triggered; in this case it is necessary to set the opening and closing limit switch triggering point with precision.
- **Prealarm (PE rEL) [OFF]**
ON The blinker comes on about 3s before the motors start.
OFF The blinker comes on at the same time as the motors start
- **Fixed code (F iHEd c o dE) [OFF]**
(UNIPRO ⇒ Advanced logics ⇒ address 13)
ON The receiver is configured for operation in fixed-code mode, see paragraph on "Radio Transmitter Cloning".
OFF The receiver is configured for operation in rolling-code mode, see paragraph on "Radio Transmitter Cloning".
- **Radio transmitter programming (rRd i o P r o G) [ON]**
(UNIPRO ⇒ Advanced logics ⇒ address 15)
ON This enables transmitter storage via radio:
1 – First press the hidden key (P1) and then the normal key (T1, T2, T3 or T4) of a transmitter already memorised in standard mode by means of the radio menu.
2 – Within 10s press the hidden key (P1) and the normal key (T1, T2, T3 or T4) of a transmitter to be memorised.
The receiver exits the programming mode after 10s, other new transmitters can be entered before the end of this time.
This mode does not require access to the control panel.
OFF This disables transmitter storage via radio.
The transmitters can only be memorised using the appropriate Radio menu.

10.3) RADIO MENU (rRd i o)

- **Add**
Allows you to add one key of a radio control device to the receiver memory; after storage it displays a message showing the receiver number in the memory location (from 01 to 64).
Add Start button (*Rdd 5tRrE*)
associates the required key to Start command
Add 2ch button (*Rdd 2ch*)
associates the required key to 2nd radio channel
- **Read** (*rERd*)
Checks one key of a receiver; if stored it displays a message showing the receiver number in the memory location (from 01 to 64), and the key number (T1, T2, T3 or T4).
- **Eliminate list** (*ErERSE 54*)
WARNING! Completely removes all memorised radio control devices from the receiver memory.
- **Receiver code reading** (RX code)
This displays the code entered in the receiver.

Consult paragraphs 12-13-14-15 for further information concerning the advanced functions of the Clonix incorporated receiver.

10.4) LANGUAGE MENU (*LAnGUAGE*)

Allows you to set the language on the display programmer.

- **ITALIAN** (*ItA*)
- **FRENCH** (*FrA*)
- **GERMAN** (*dEU*)
- **ENGLISH** (*EnG*)
- **SPANISH** (*ESp*)

10.5) DEFAULT MENU (*dEFault*)

Restores the preset default values on the control unit. After restoring, a new autose operation must be carried out.

10.6) DIAGNOSTICS AND MONITORING

The display on the **LINX** panel shows some useful information, both during normal operation and in the case of malfunctions.

Diagnosics:

In the case of malfunctions, the display shows a message indicating which device needs to be checked:

- PED = PED input activation
- STRT = START input activation
- STOP = STOP input activation
- PHOT = PHOT input activation
- FLT = FAULT input activation for checked photocells
- SWO1 = activation of Motor 1 opening limit switch input
- SWC1 = activation of Motor 1 closing limit switch input
- SWO2 = activation of Motor 2 opening limit switch input
- SWC2 = activation of Motor 2 closing limit switch input

In the case where an obstacle is found, the **LINX** panel stops the door and activates a reverse manoeuvre; at the same time the display shows the "AMP" message.

Monitoring:

During the opening and closing phases, the display shows four digits separated by a dot, for example 35.40. The digits are constantly updated during the manoeuvre, and represent the maximum torque reached by motor 1 (35) and motor 2 (40).

These values allow the torque setting to be corrected.

If the maximum torque value reached during the manoeuvre gets sensibly close to the value set in the parameter menu, malfunctions may occur in the future following wear or slight door deformation.

It is therefore advisable to check the maximum torque reached during some of the manoeuvres carried out in the course of installation, and if necessary set a value about 15-20 percent points higher in the parameter menu.

10.7) AUTOSET MENU (*Autaset*)

Allows you to automatically set the Motor torque.

WARNING!! The autose operation is only to be carried out after checking the exact leaf (opening/closing) movement, and correct limit-switch activation.

As soon as the OK pushbutton is pressed, the "... .." message is displayed, and the control unit executes an opening manoeuvre followed by a closing manoeuvre, during which the minimum torque value needed for leaf movement is automatically set.

During this phase, it is important to avoid obscuring the photocells, as well as using the START, STOP or PED commands and the display.

After this, if autose operation has been successfully completed, the control unit displays the "OK" message and, after pressing any key, returns to the Autose menu.

If, on the other hand, the control unit displays the "KO" message, it means that the autose procedure has not been successfully completed; it is thus necessary to check the wear condition of the gate and the regular movement of the leaves before proceeding to a new autose operation.

WARNING! During the autose phase, the obstacle detection function is not active, therefore the installer must control the automation movement and prevent persons and things from approaching or standing within the automation working range.

In the case where buffer batteries are used, autose operation must be carried out with the control panel supplied by mains power voltage.



WARNING: Check that the impact force value measured at the points established by the EN 12445 standard is lower than that specified in the EN 12453 standard.



Incorrect sensitivity setting can cause injuries to persons or animals, or damage to things.

11) STATISTICS

Having connected the UNIPRO programmer to the control unit, enter the CONTROL UNIT / STATISTICS menu and scroll the screenful showing the statistical parameters:

- Board microprocessor software version.
- Number of cycles carried out. If motors are replaced, count the number of manoeuvres carried out up to that time.
- Number of cycles carried out from the latest maintenance operation. It is automatically set to zero after each self-diagnosis or parameter writing.
- Date of latest maintenance operation. To be updated manually from the appropriate menu "Update maintenance date".
- Installation description. 16 characters can be entered for installation identification.

12) INTEGRATED RECEIVER TECHNICAL SPECIFICATION

Receiver output channels:

- output channel 1, if activated, controls a START command.
- output channel 2, if activated, controls the excitation of the 2nd radio channel relay for 1s.

Transmitter versions which can be used:

all Rolling Code transmitters compatible with



ANTENNA INSTALLATION

Use an antenna tuned to 433MHz.

For Antenna-Receiver connection, use RG8 coaxial cable.

The presence of metallic masses next to the antenna can interfere with radio reception. In case of insufficient transmitter range, move the antenna to a more suitable position.

13) RECEIVER CONFIGURATION

The on-board receiver combines characteristics of utmost safety in copying variable code (rolling code) coding with the convenience of carrying out transmitter "cloning" operations thanks to an exclusive system.

Cloning a transmitter means creating a transmitter which can be automatically included within the list of the transmitters memorised in the receiver, either as an addition or as a replacement of a particular transmitter.

Cloning by replacement is used to create a new transmitter which takes the place of the one previously memorised in the receiver; in this way a specific transmitter can be removed from the memory and will no longer be usable. Therefore it will be possible to remotely program a large number of additional transmitters or, for example, replacement transmitters for those which have been lost, without making changes directly to the receiver.

When coding safety is not a decisive factor, the on-board receiver allows you to carry out fixed-code additional cloning which, although abandoning the variable code, provides a high number of coding combinations, therefore keeping it possible to "copy" any transmitter which has already been programmed.

PROGRAMMING

Transmitter storage can be carried out in manual mode or by means of the UNIRADIO programmer which allows the complete installation database to be managed through the Eedbase software.

In this second case, receiver programming takes place through the connection of UNIRADIO to the **LINX** control panel, using the UNIFLAT and UNIDA accessories as indicated in Fig. 18.

14) MANUAL PROGRAMMING

In the case of standard installations where advanced functions are not required, you can proceed to manual storage of the transmitters, making reference to fig. B for basic programming.

- If you wish the transmitter to activate output 1 (START) by means of key1, key2, key3 or key4, enter the transmitter in menu "Start key", as in fig. B.
- If you wish the transmitter to activate output 2 (2nd radio channel relay) by means of key1, key2, key3 or key4, enter the transmitter in menu "2nd ch. key", as in fig. B.

Note: Hidden key P1 appears differently depending on the transmitter model. For transmitters with hidden key, press hidden key P1 (fig. B1). For transmitters without hidden key, the key P1 function corresponds to simultaneously pressing the 4 transmitter keys or, after opening the battery compartment, bridging the two P1 points by means of a screwdriver (fig. B2).

IMPORTANT NOTE: ATTACH THE ADHESIVE KEY LABEL TO THE FIRST MEMORISED TRANSMITTER (MASTER).

In the case of manual programming, the first transmitter assigns the key code to the receiver; this code is necessary in order to carry out subsequent cloning of the radio transmitters.

15) RADIO-TRANSMITTER CLONING

Rolling-code cloning / Fixed-code cloning

Make reference to the UNIRADIO Instructions and the CLONIX Programming Guide.

15.1) ADVANCED PROGRAMMING: COLLECTIVE RECEIVERS

Make reference to the UNIRADIO Instructions and the CLONIX Programming Guide.

16) LIMIT SWITCH ADJUSTMENT (Fig.12)

- Identify the opening and closing limit switches (FC1 and FC2) taking into account that:
 - FC1** corresponds to the **CLOSING** limit switch
 - FC2** corresponds to the **OPENING** limit switch.
- With the gate completely closed or opened, rotate the corresponding cam until the relevant limit microswitch is heard being tripped, then lock the cam into position by means of the appropriate screws.
- Check that the limit switches are triggered correctly, by initiating a few complete motor-driven opening and closing cycles.
- If the "lock hold" logic is set to ON in the LINX panel, the leaf continues its stroke for about 0,5 seconds, in order to ensure stability and perfect leaf stopping against the end-of-stroke backstops.

17) EMERGENCY MANOEUVRE (Fig.19)

In the case where the power supply is off, or any faults are present, the manual emergency manoeuvre can be carried out by operating the external release lever (Fig.1 ref."S").

- 1) Insert the release key and turn it clockwise (Fig.19 ref."1").
- 2) Move lever "S" until the lock is released (Fig.19 ref."2").
- 3) Keep the lever in the release position by turning the key clockwise (Fig.19 ref."3").
- 4) Push the leaf slowly to open or close the gate.

To reactivate motor-driven operation, turn the key clockwise to free the lever from its released position, then return it to its initial position for normal operation.

18) MANUAL WIRE RELEASE DEVICE (Fig.13)

The manual emergency release can be operated by a wire device:

- Take all the metal cable out of the sheath and insert it into the release lever.
- Lock the sheath and suitably adjust its position by means of the appropriate screw.
- The cover is provided with a section to be torn off for the sheath to go through.
- For further information, refer to the specific instructions for the release device.

19) VIRGO BAT KIT INSTALLATION

- Fix the SBS board on the back of the panel box by means of a screw, as indicated in Fig.14.
- Fix the board protection box (Fig.14 - "C") supplied with the kit.
- Position the two batteries on the supports, as indicated in Fig.14 ("A").
- Secure the batteries using the bracket and screws supplied.
- Proceed to wire the SBS board with reference to the diagram in Fig.14.

20) AUTOMATION CHECK

Before allowing the automation to be used normally, carry out the following procedure very carefully:

- Check the correct functioning of all safety devices (limit microswitches, photocells, sensitive edges etc.).
- Check that the thrust (anti-squash) force of the leaf is within the limits set by current regulations.
- Check the manual opening command.
- Check the opening and closing operations with the control devices in use.
- Check the standard and customised electronic functioning logic.

21) AUTOMATION OPERATION

Since the automation can be remote-controlled by means of a remote control device or a start button, and so out of sight, the good working order of all the safety devices should be checked regularly. In the event of any anomalous functioning of the safety devices, consult a specialised technician immediately. Keep children at a safe distance from the automation operation area.

22) CONTROL

The automation is used for the power-operated opening and closing of the gate. The control can be of a number of types (manual, remote-controlled, magnetic badge access control, etc.) depending on requirements and the characteristics of the installation. See the specific instructions for the various control systems. Users of the automation must be instructed about its control and operation.

23) MAINTENANCE

Disconnect the power supply when carrying out any maintenance operations.

- Lubricate the **VIRGOs** of the manoeuvring arm regularly.
- Clean the lenses of the photocells every so often.
- Have a qualified person (installer) check correct motor torque setting.
- In the event of any anomalous functioning which cannot be resolved, disconnect the power supply and contact a specialised technician (installer). Whilst the automation is out of order, activate the manual release to allow manual opening and closing.

24) SCRAPPING

WARNING! This operation should only be carried out by qualified personnel. Materials must be disposed of in conformity with the current regulations. In case of scrapping, the automation devices do not entail any particular risks or danger. In case of materials to be recycled, these should be sorted out by type (electrical components, copper, aluminium, plastic etc.).

25) DISMANTLING

WARNING! This operation should only be carried out by qualified personnel. When the automation system is disassembled to be reassembled on another site, proceed as follows:

- Disconnect the power supply and the entire external electrical installation.
- In the case where some of the components cannot be removed or are damaged, they must be replaced.

WARNINGS

Correct controller operation is only ensured when the data contained in the present manual are observed. The company is not to be held responsible for any damage resulting from failure to observe the installation standards and the instructions contained in the present manual.

The descriptions and illustrations contained in the present manual are not binding. The Company reserves the right to make any alterations deemed appropriate for the technical, manufacturing and commercial improvement of the product, while leaving the essential product features unchanged, at any time and without undertaking to update the present publication.

Fig. A

ACCESS TO MENUS

Press the OK key
OK

OK

bFt Control unit software version

L inH 10 No. total manoeuvres (in thousands)

0000 No. manoeuvres since latest maintenance (in thousands)

00 No. radio control devices memorised

LEGENDA



- + ↑
- ↓
- OK ↵

+/-

Simultaneously press the + and - keys. Simultaneous pressure of the + and - keys allows you to exit the active menu and return to the preceding menu; if this takes place at the main menu level, programming is exited and the display switched off. The modifications made are only confirmed if the OK key is subsequently pressed.

[00]

Preset value

↑ +/ON
↓ -/OFF

Parameter increment/reduction or ON/OFF commutation

OK

Press OK key (Enter/confirm)

↓ +↑

Menu scrolling (+ = preceding - = following)

PrG

Message: Programming in progress

Ko

Message: KO! (value or function error)

-ε

Message: "Wait" (enter value or function)

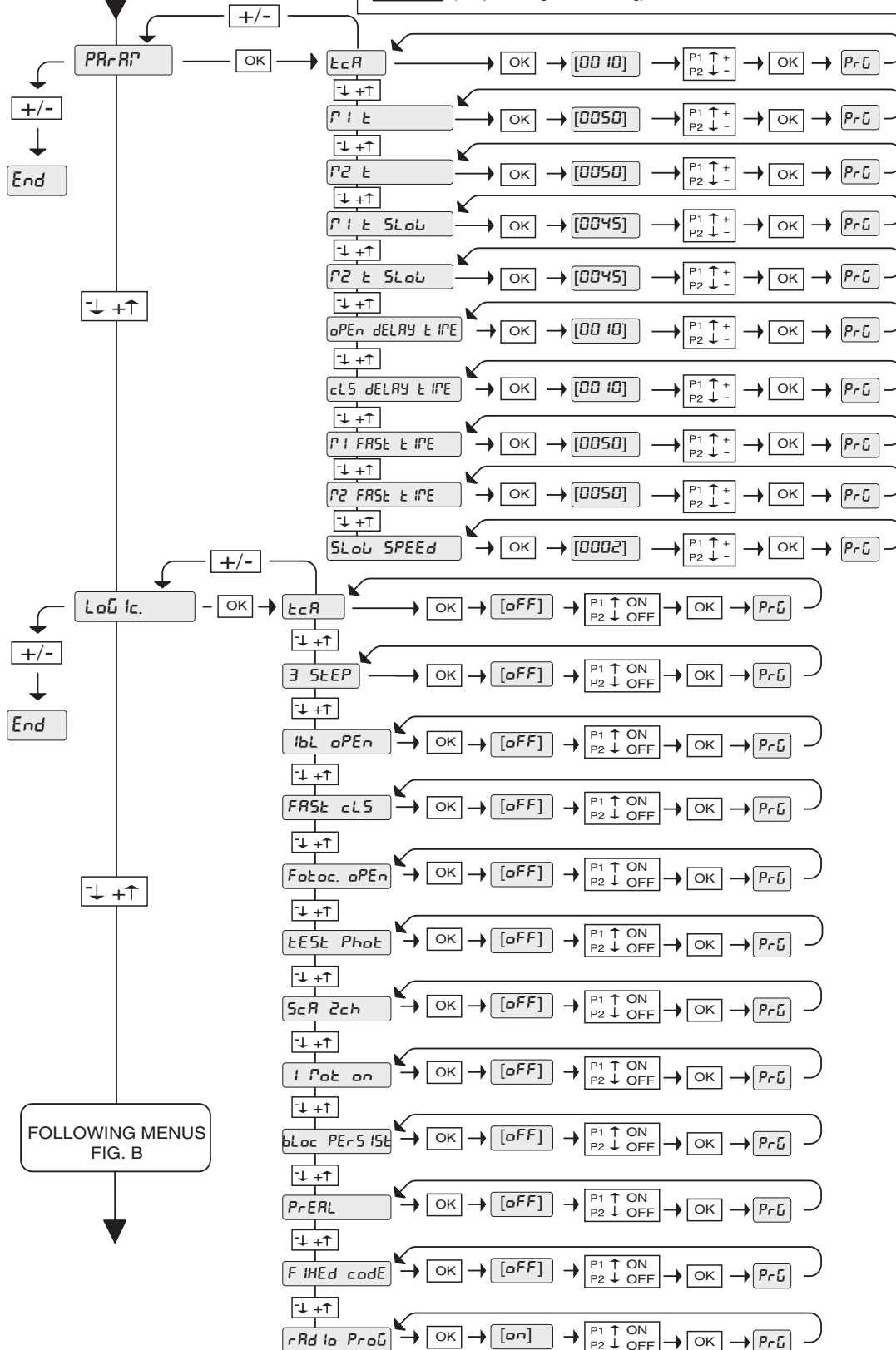
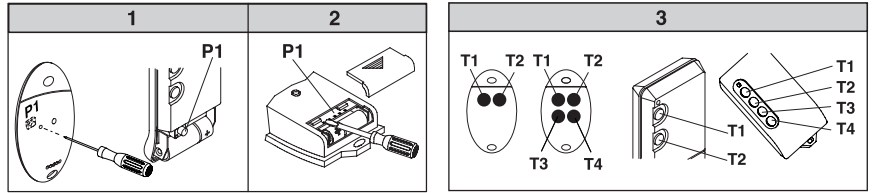
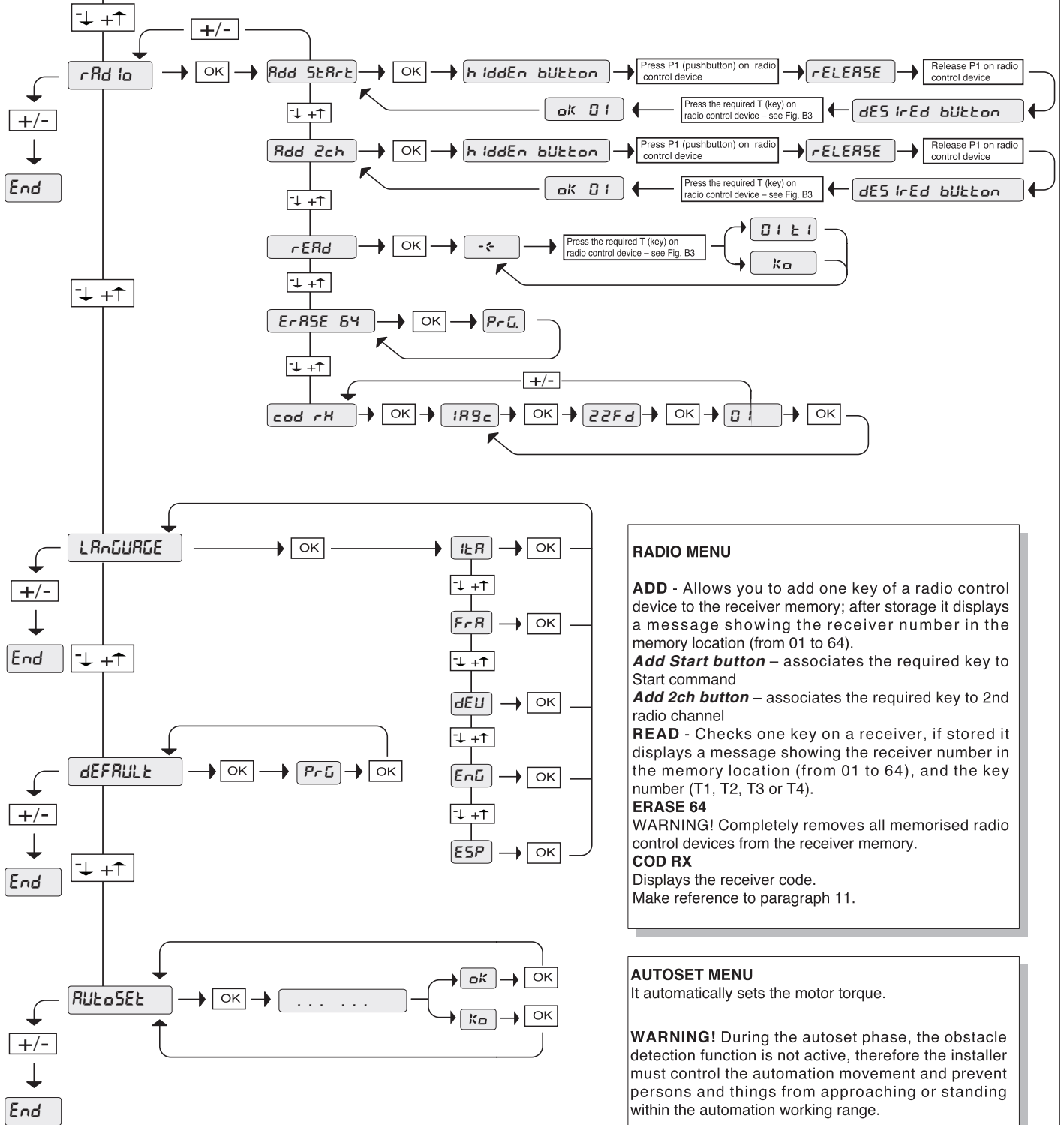


Fig. B

D871415_04



PRECEDING MENU FIG. A



RADIO MENU

ADD - Allows you to add one key of a radio control device to the receiver memory; after storage it displays a message showing the receiver number in the memory location (from 01 to 64).

Add Start button – associates the required key to Start command

Add 2ch button – associates the required key to 2nd radio channel

READ - Checks one key on a receiver, if stored it displays a message showing the receiver number in the memory location (from 01 to 64), and the key number (T1, T2, T3 or T4).

ERASE 64
WARNING! Completely removes all memorised radio control devices from the receiver memory.

COD RX
 Displays the receiver code.
 Make reference to paragraph 11.

AUTOSET MENU

It automatically sets the motor torque.

WARNING! During the autaset phase, the obstacle detection function is not active, therefore the installer must control the automation movement and prevent persons and things from approaching or standing within the automation working range.

Fig. 1

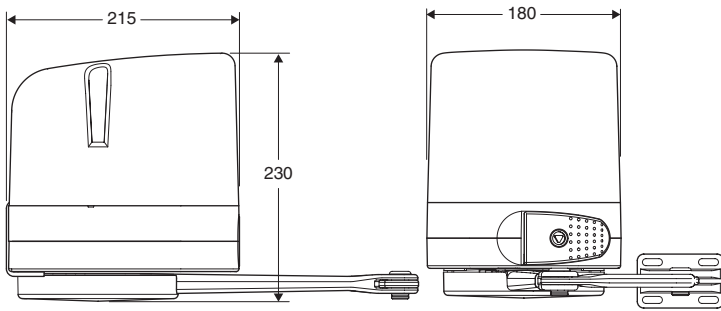


Fig. 2

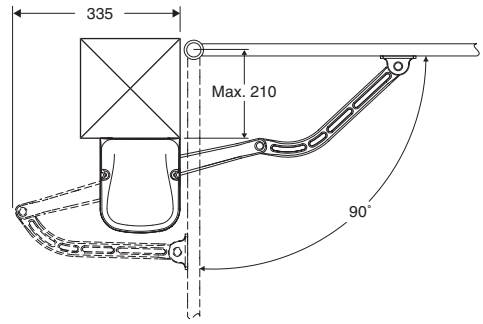


Fig. 3

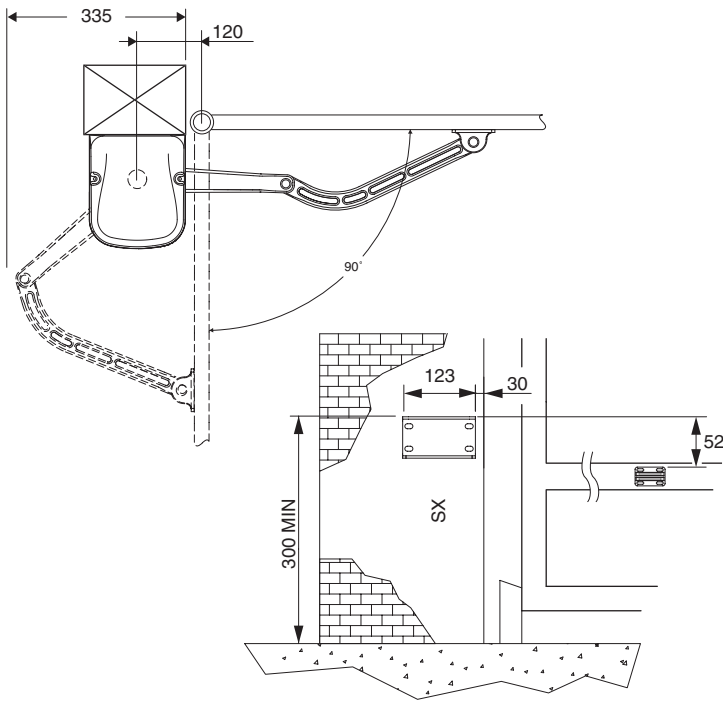


Fig. 5

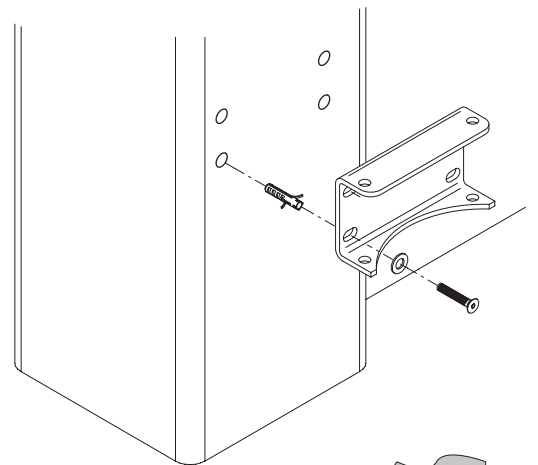


Fig. 4

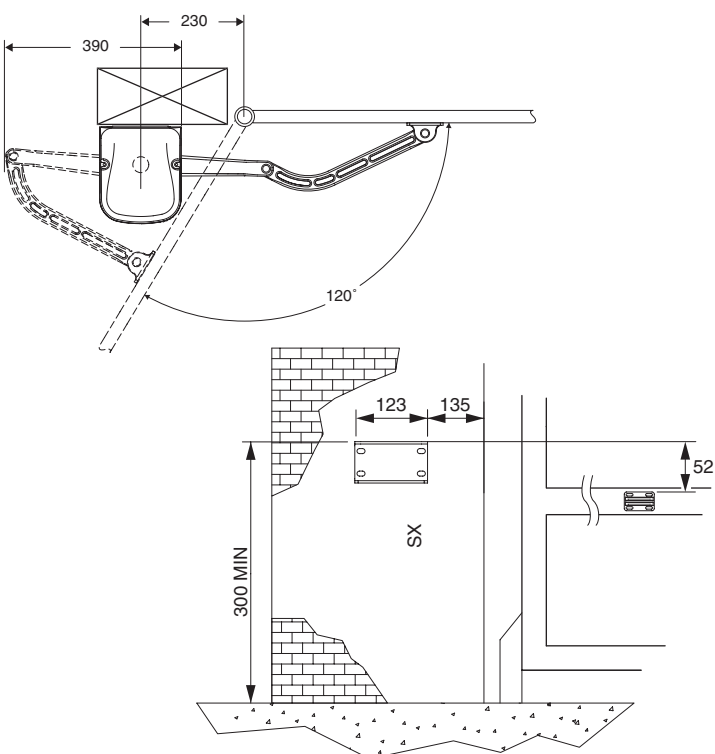


Fig. 6

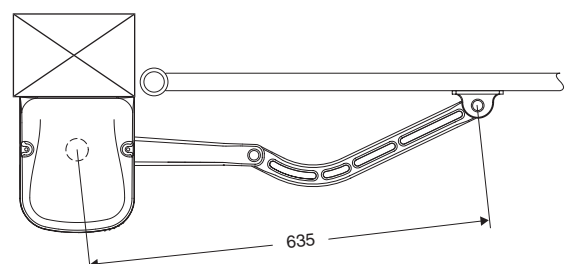
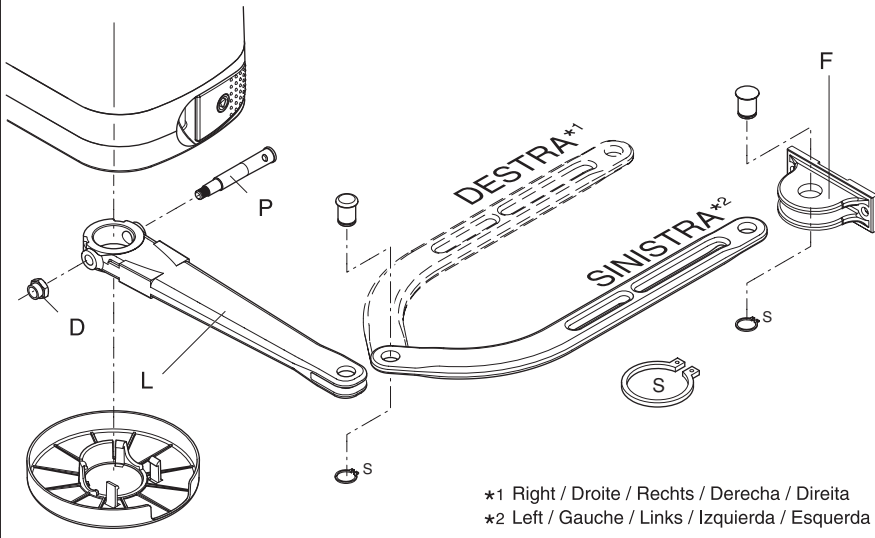


Fig. 7



*1 Right / Droite / Rechts / Derecha / Direita
 *2 Left / Gauche / Links / Izquierda / Esquerda

Fig. 8

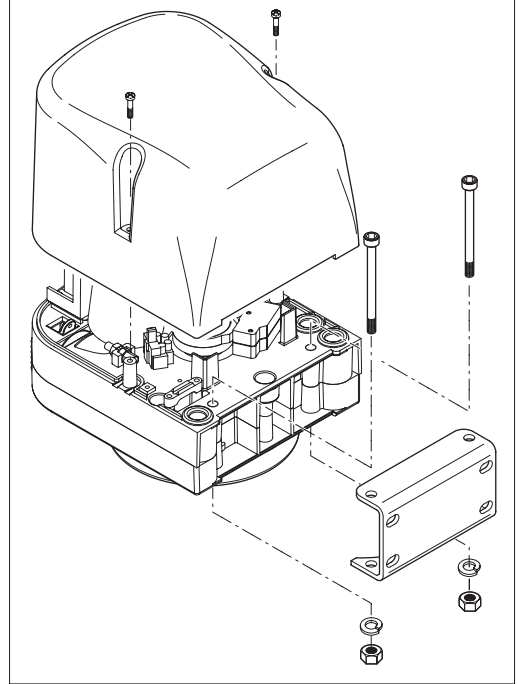


Fig. 9

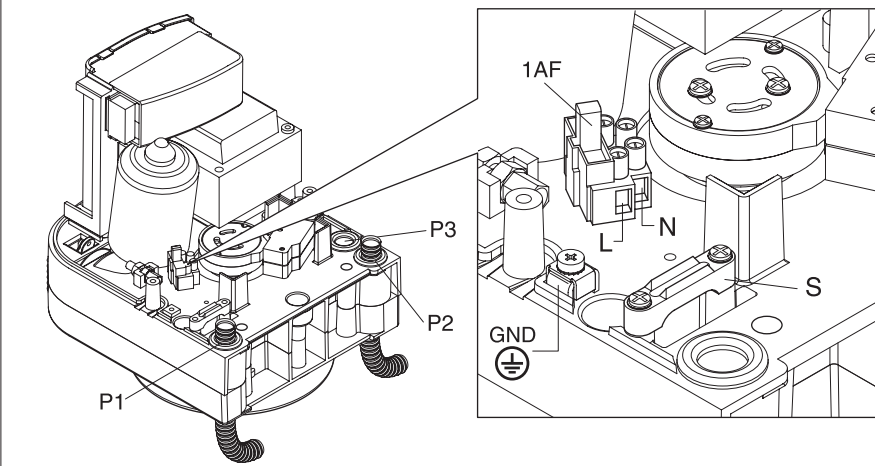


Fig. 10

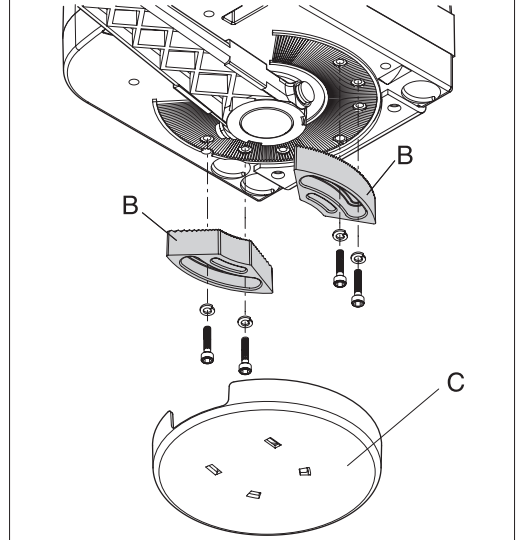


Fig. 11

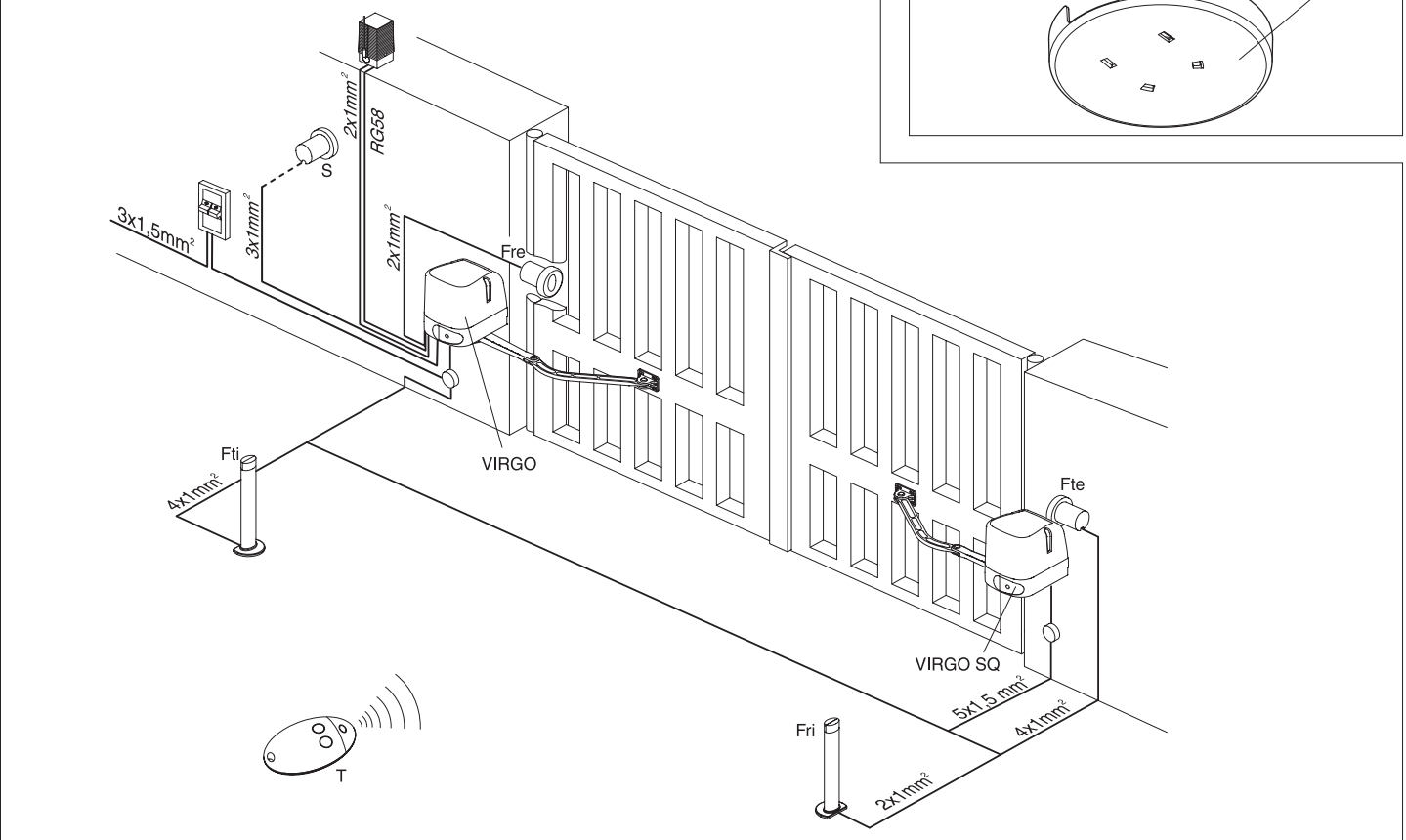
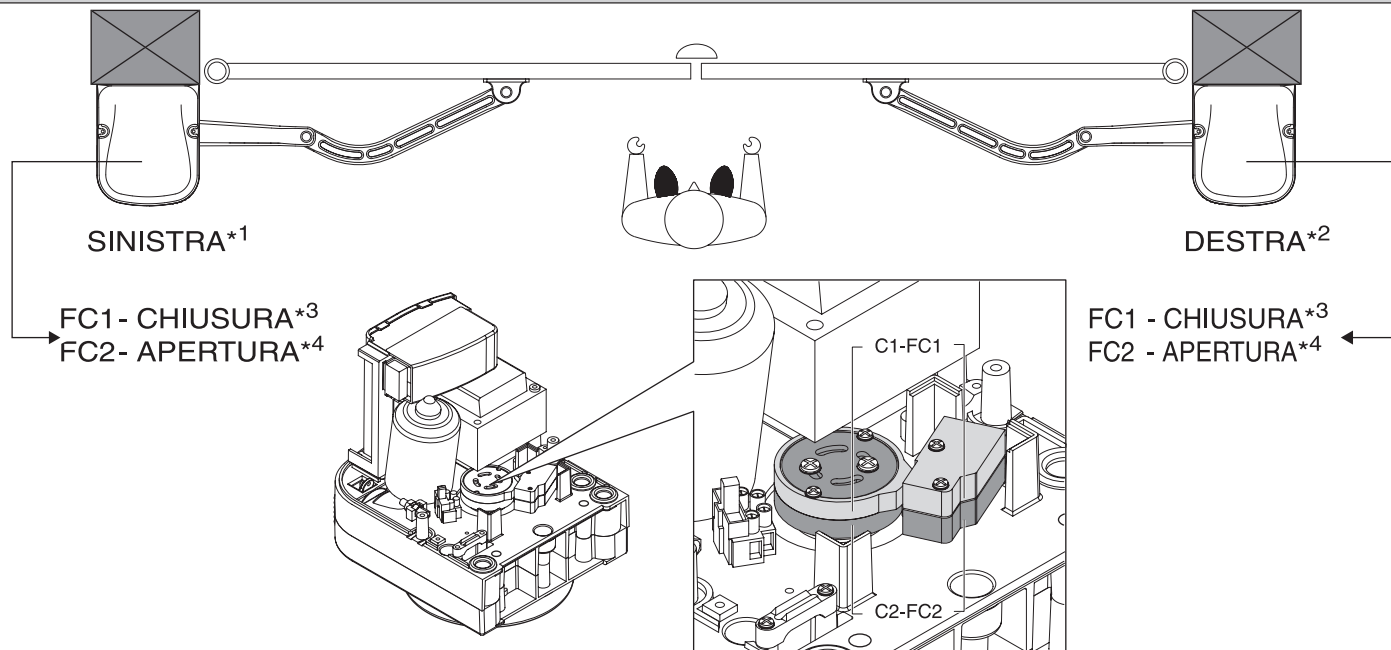


Fig. 12



*1 Sinistra / Left / Gauche / Links / Izquierda / Esquerda

*2 Destra / Right / Droite / Rechts / Derecha / Direita

*3 CHIUSURA / CLOSING / FERMETURE / SCHLIESSUNG / CIERRE / FECHO

*4 APERTURA / OPENING / OUVERTURE / ÖFFNUNG / APERTURA / ABERTURA

Fig. 13

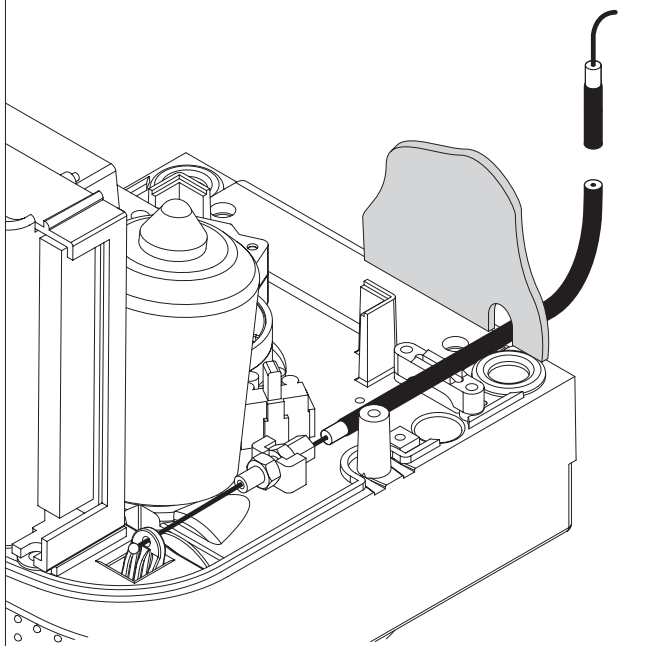


Fig. 14

VIRGO BAT

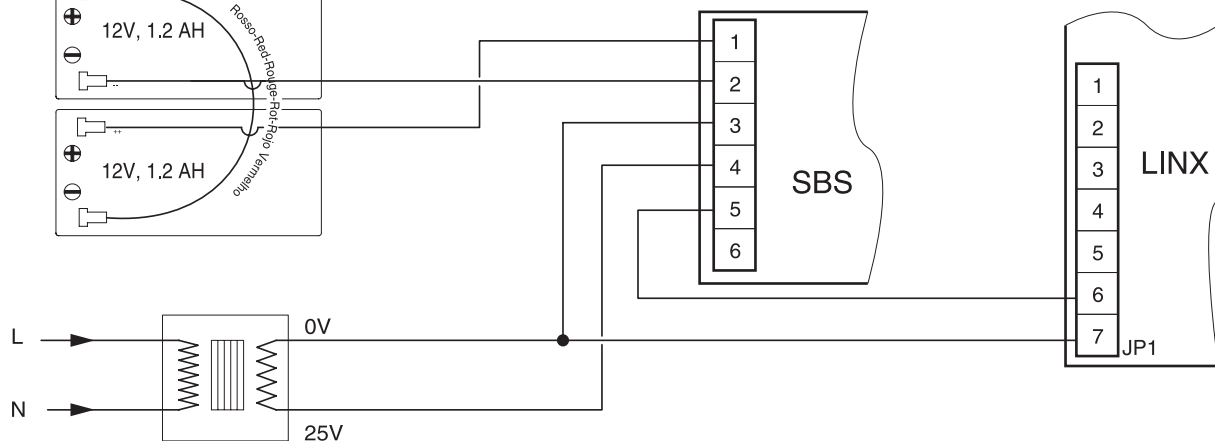
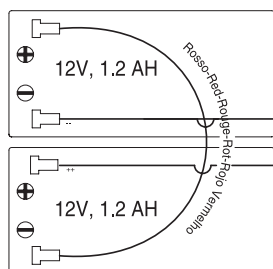
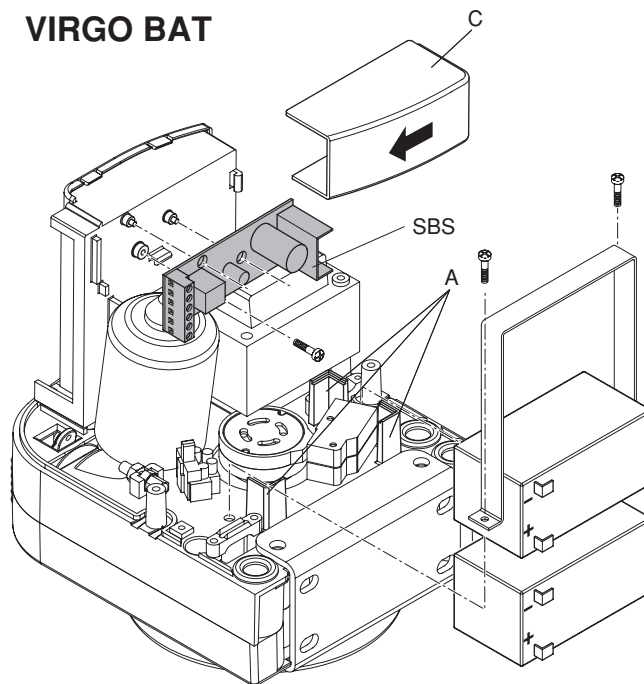
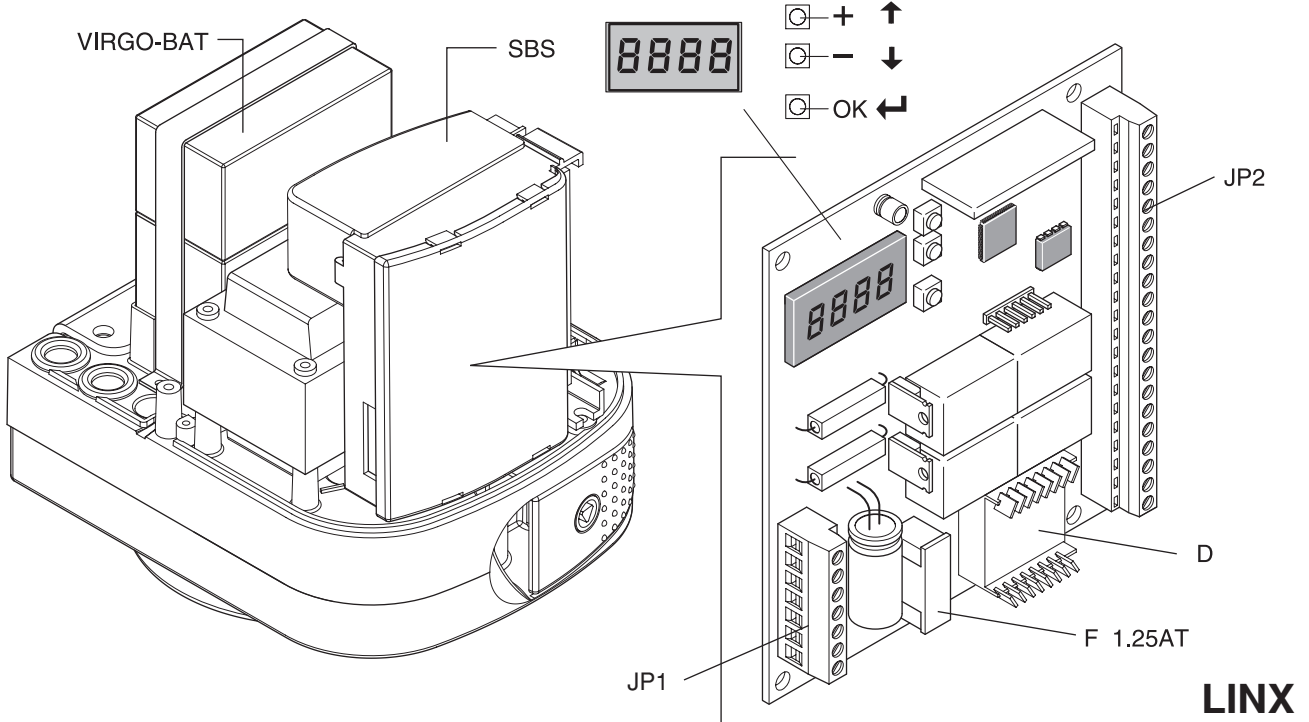


Fig. 15



D871415_04

Fig. 16

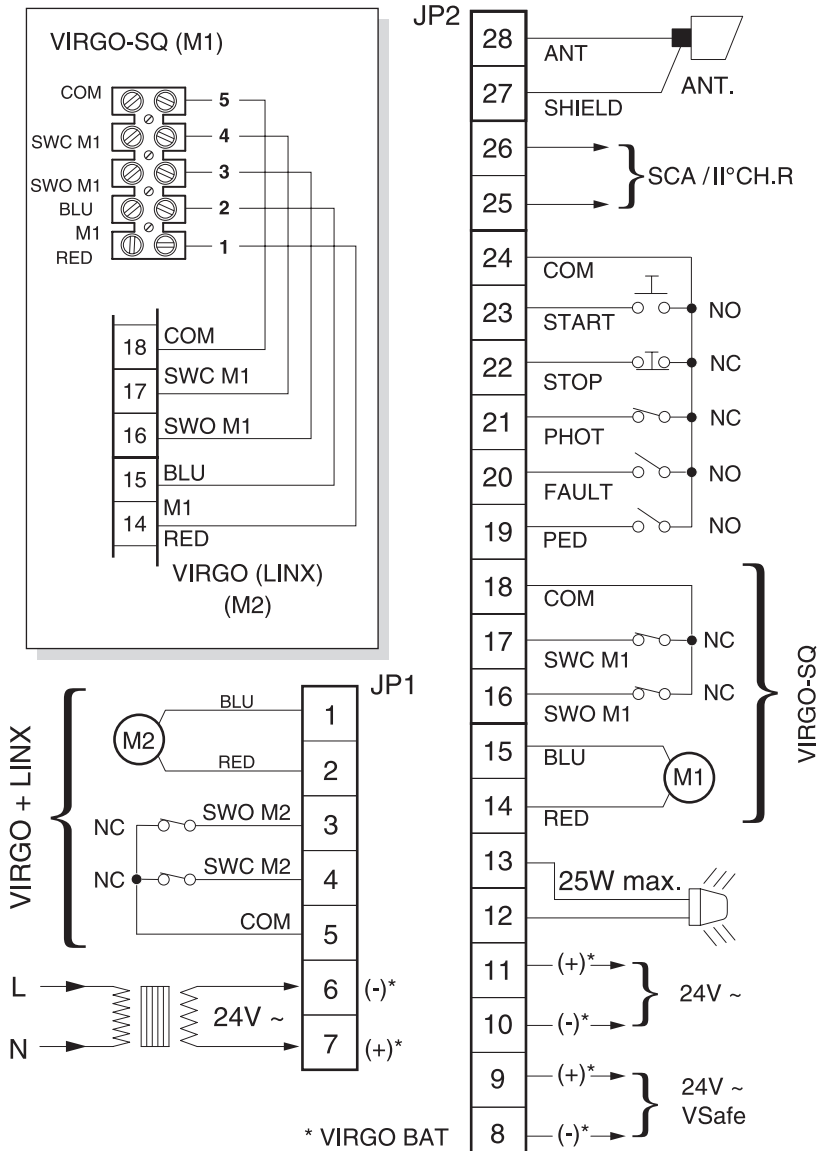


Fig. 17

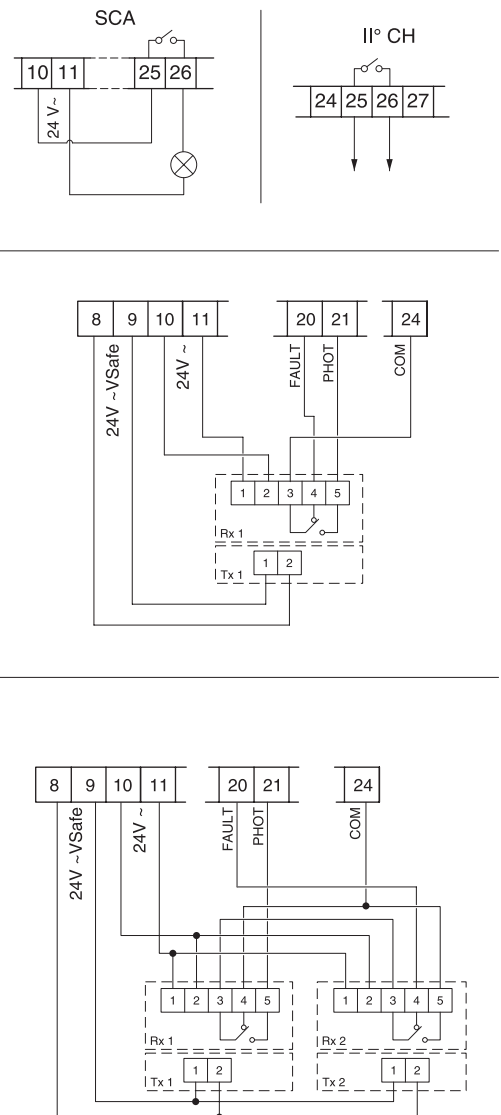


Fig. 18

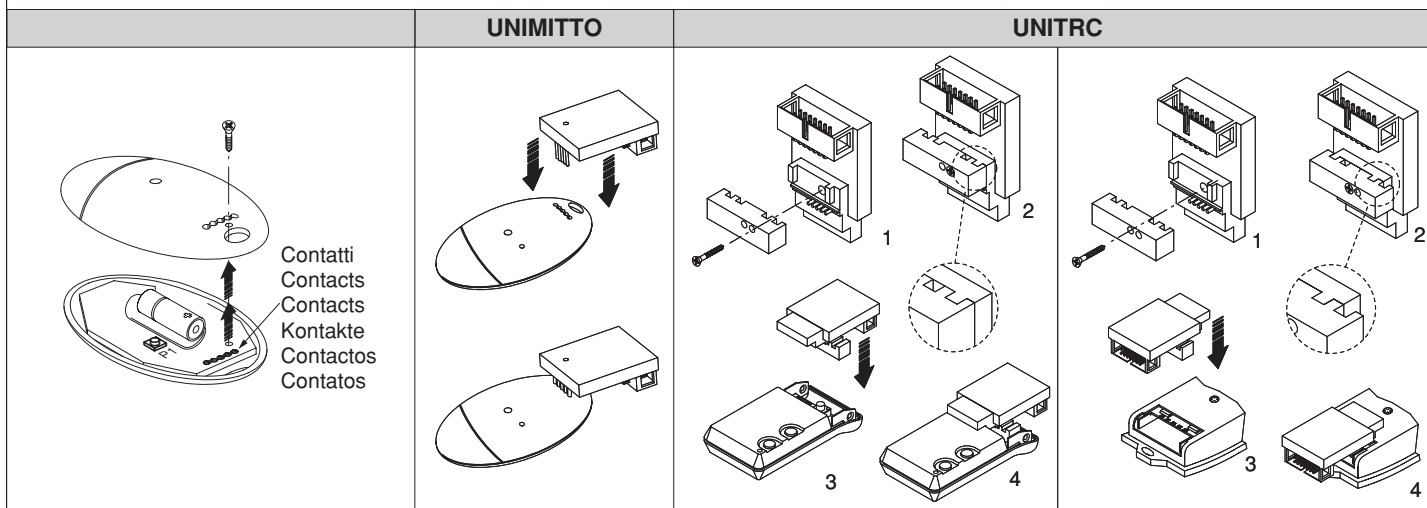
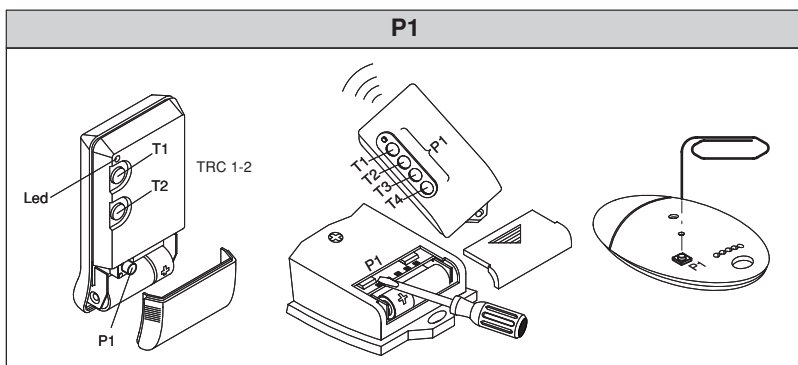
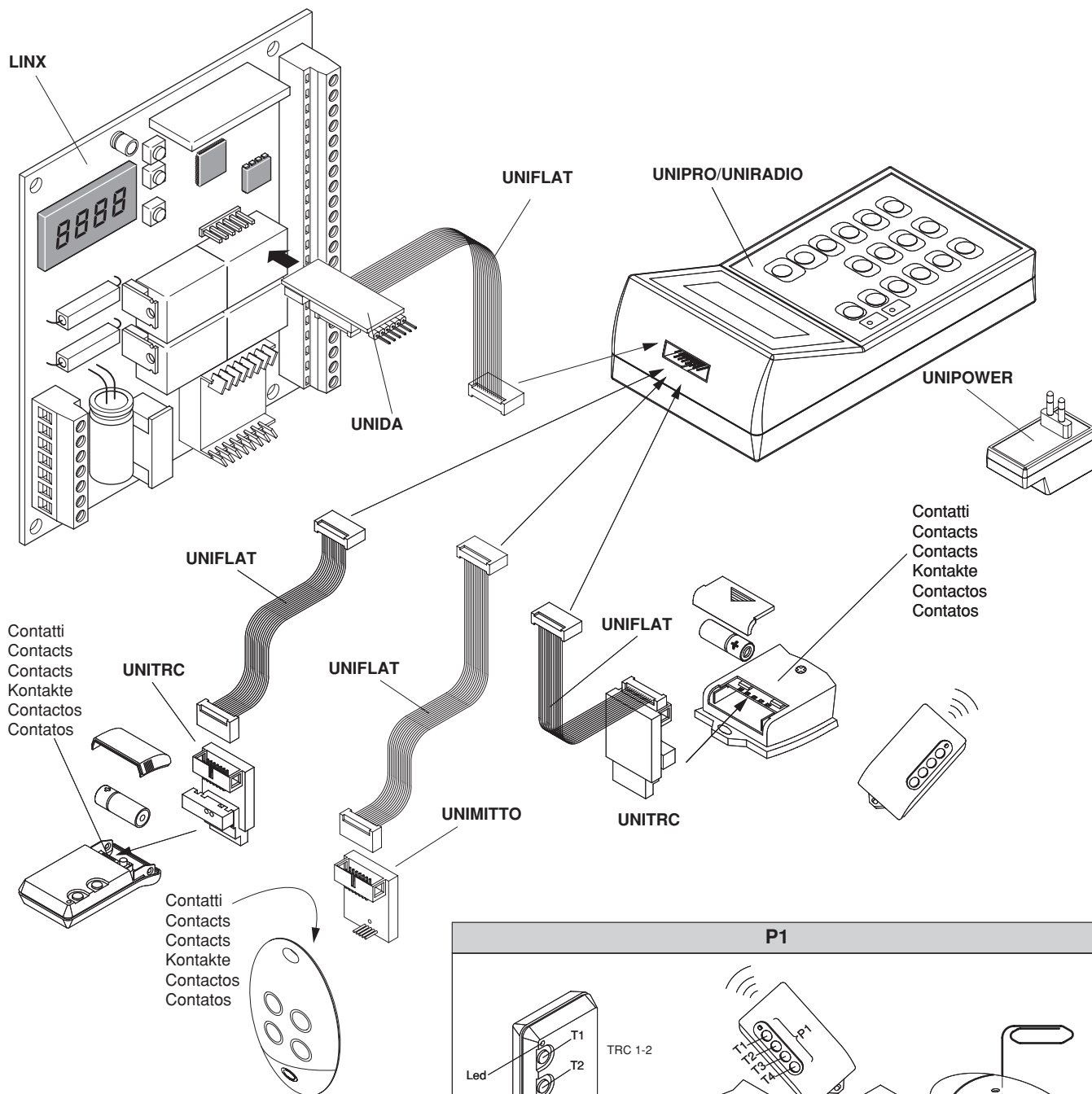
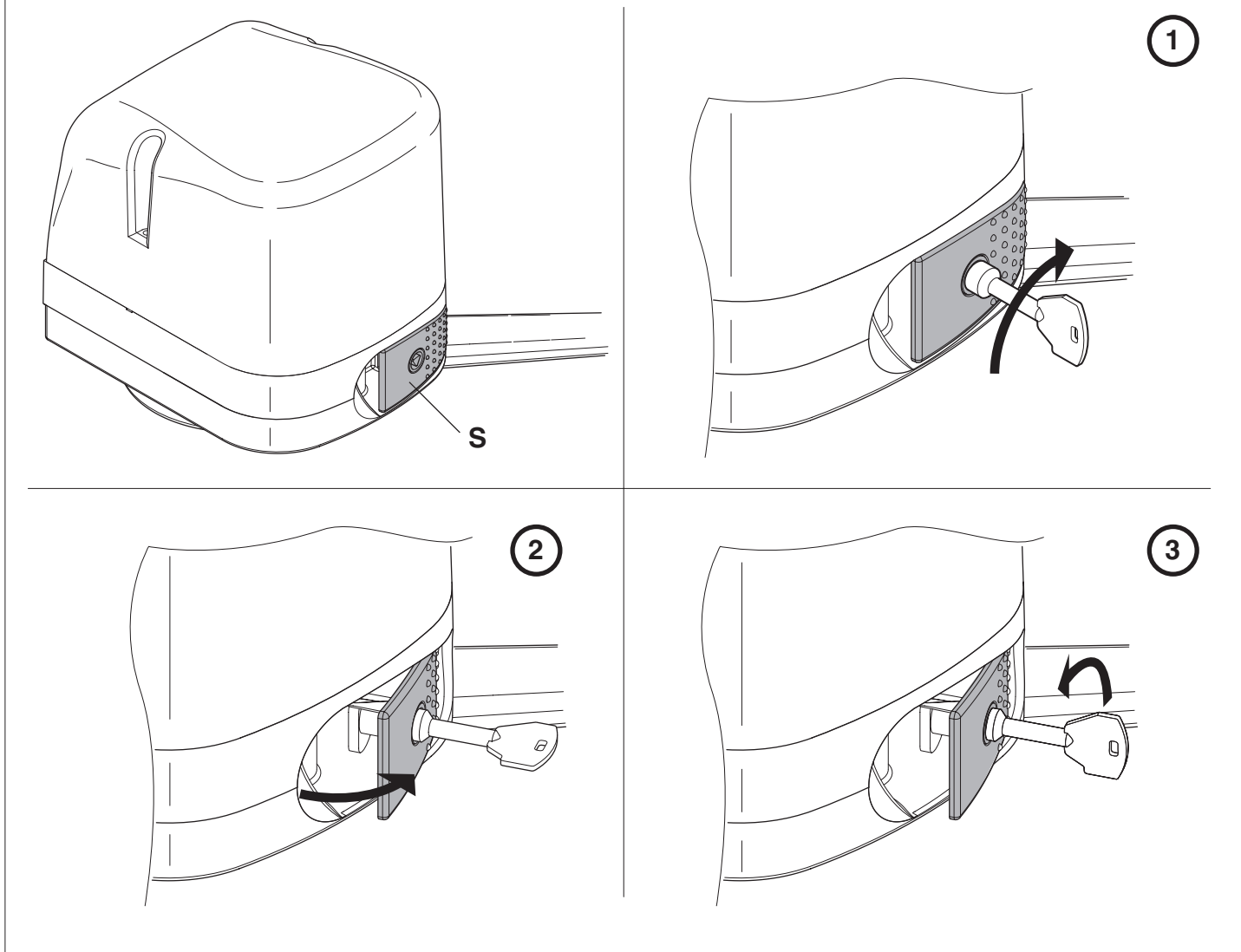


Fig. 19

D871415_04



BFT FRANCE
 AUTOMATISMES BFT FRANCE
 13 Bld E. Michelet, 69008 Lyon
 e-mail: infofrance@bft.it

Tel. (0033) 0478760988
 Fax (0033) 0478769223

BFT DEUTSCHLAND
 BFT Torantriebssysteme GmbH
 Hintere Str. 100, 90768 Fürth
<http://www.bft-torantriebe.de>

Tel. 0911-7660090
 Fax 0911-7660099

BFT S.p.a.

ITALIA



Via Lago di Vico, 44
 36015 Schio (VI)
 Tel.naz. 0445 696511
 Tel.int. +39 0445 696533
 Fax 0445 696522
 Internet: www.bft.it
 E-mail: sales@bft.it